

# Relationship Identification for Social Network Discovery

*Chris Diehl  
JHU/APL*

*Galileo Namata and  
Lise Getoor  
University of Maryland –  
College Park*

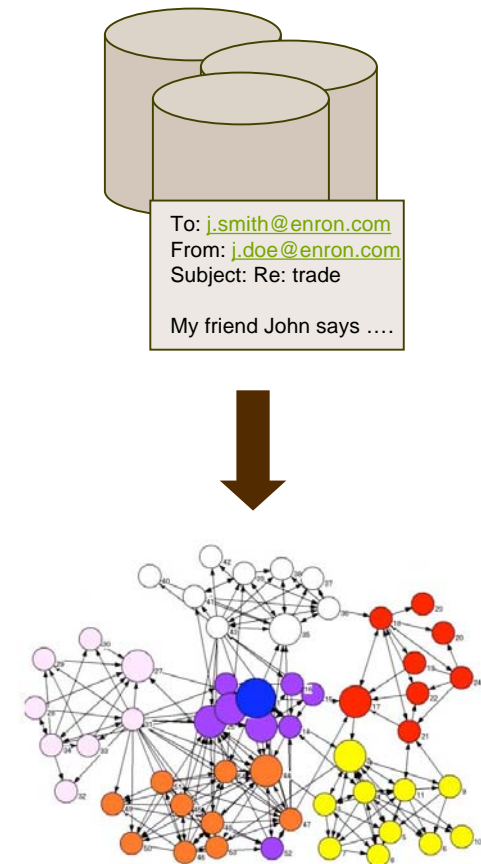
**APL**

*The Johns Hopkins University*  
APPLIED PHYSICS LABORATORY



# Main Contribution

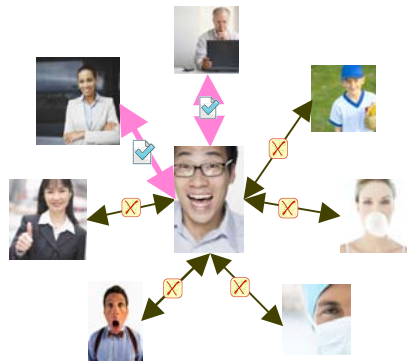
- **Task**
  - Identify communication relationships exhibiting a given social relationship in a communications archive
- **Main Result**
  - Defined and evaluated a supervised ranking approach for relationship identification
- **Primary Lesson Learned**
  - Simple relationship representations go a long way!



# Tools and Techniques

**Training**

**Labeled Ego Networks**



**Large-Margin Egocentric Relationship Ranking**

$$h(f_r) - h(f_o) > 0$$

$$\forall f_r \in \mathcal{F}_r(n), f_o \in \mathcal{F}_o(n), n \in N_t$$

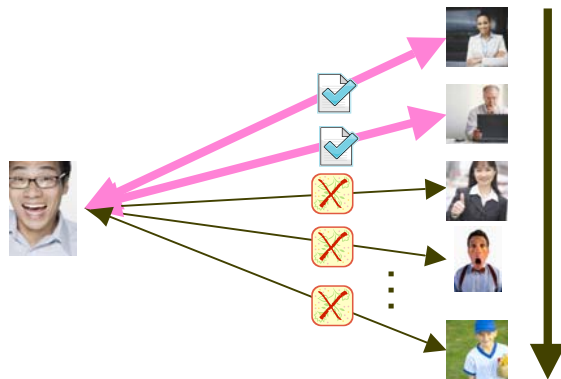
$$h(f) = w \cdot \Phi(f) : \mathbb{R}^p \rightarrow \mathbb{R}$$

$$C(w) = \frac{1}{2} \|w\|^2 + \lambda \sum_{n \in N_t} \sum_{f_r \in \mathcal{F}_r(n)} \sum_{f_o \in \mathcal{F}_o(n)} g(m(f_r, f_o))$$



**Analysis**

**Relationship Ranking**

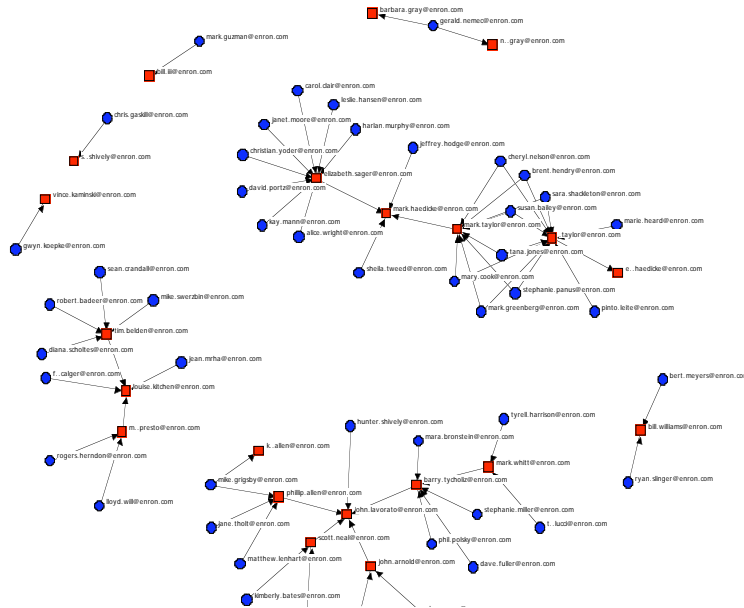


**Message Ranking**



# Evaluation - Enron Manager-Subordinate Relations

*Organizational Ground Truth  
January 2000 – November 2001*



*Relationship Ranking*

<i>Approach</i>	<i>Mean Reciprocal Rank</i>
<b>Content-Based with Attribute Selection</b>	<b>0.719</b>
<b>Content-Based</b>	<b>0.660</b>
<b>Traffic-Based</b>	<b>0.518</b>
<b>Random Selection</b>	<b>0.211</b>
<b>Worst Case</b>	<b>0.141</b>

# Evaluation - Enron Manager-Subordinate Relations

From: [tim.belden@enron.com](mailto:tim.belden@enron.com)

To: [john.lavorato@enron.com](mailto:john.lavorato@enron.com),  
[louise.kitchen@enron.com](mailto:louise.kitchen@enron.com)

Subject: Off-Site Travel Question

The e-mail that was sent out many weeks ago about the off-site indicated that it would run from Wednesday night to Saturday AM. It is now running Thursday until Sunday... I had already made arrangements to attend a wedding in Oregon on Saturday night. It is a good friend of mine and my wife's... While I have authority to place millions of dollars of the company's money at risk, I don't feel comfortable signing up for a \$7,000 extra flight without talking to you guys... Any thoughts would be greatly appreciated.

# Evaluation - Enron Manager-Subordinate Relations

From: [christian.yoder@enron.com](mailto:christian.yoder@enron.com)

To: [elizabeth.sager@enron.com](mailto:elizabeth.sager@enron.com),  
[genia.fitzgerald@enron.com](mailto:genia.fitzgerald@enron.com)

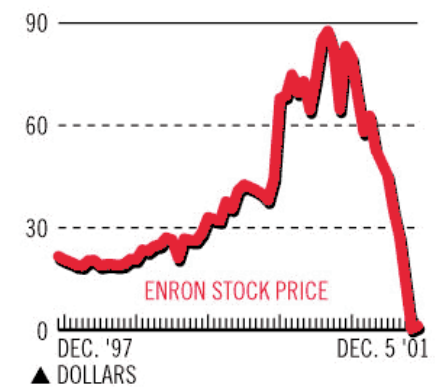
Subject: Happiness

Happiness is looking at the new legal org chart (which Jan just now dropped on my desk). I always approach these dry documents as though they were trigrams resulting from throwing the coins and consulting the I-Ching. At the top of the trigram which I find myself listed in I see a single name: Elizabeth Sager, and at the bottom I see the name Genia FitzGerald. ... cgy

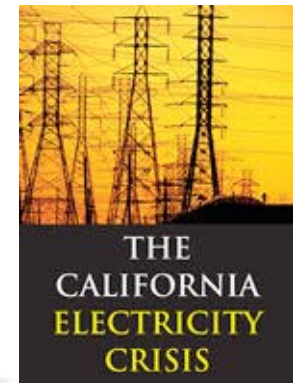
# Implications of Work

- **Event-Based Retrospective Analysis**
  - *“What happened?”*
  - **Goals**
    - Understand Org. Structure
    - Associate Org. Actions with Events
  - **Interactive relationship identification key**
  - **A number of learning challenges remain**

## STUNNING COLLAPSE



Data: Bloomberg Financial Markets



# Points for Discussion

- **Personal Email Management vs. Retrospective Analysis in Email Archives**
  - What challenges do they share in common?
    - Tracking Context
    - Associating Emails with Contextual Dimensions
  - What aspects are distinct?
    - Scale
    - Observability
    - Available Context
- **Process Design and Evaluation**
  - Integration of HCI, Algorithms, Visualization
  - Strategies for evaluating process utility?

